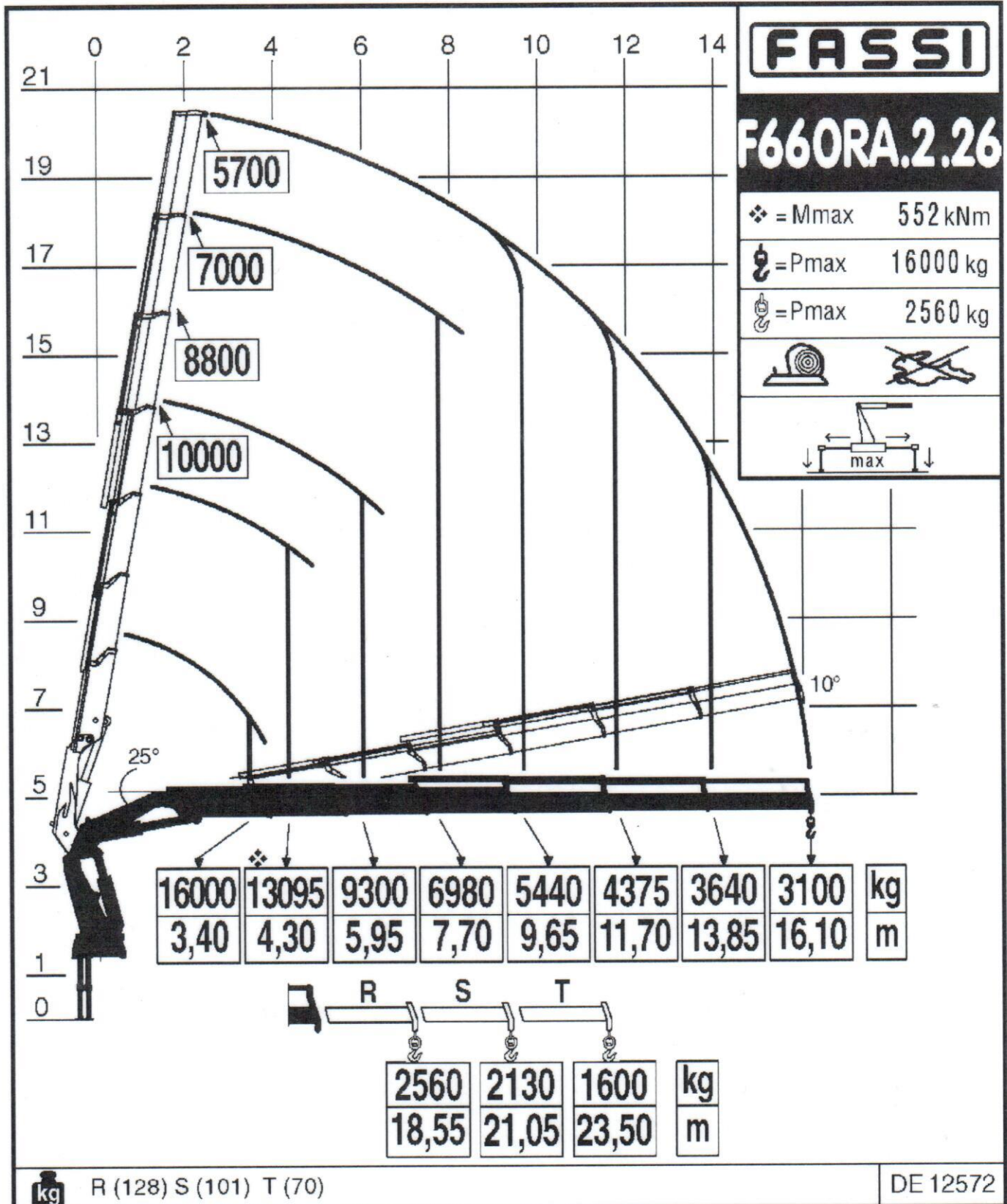
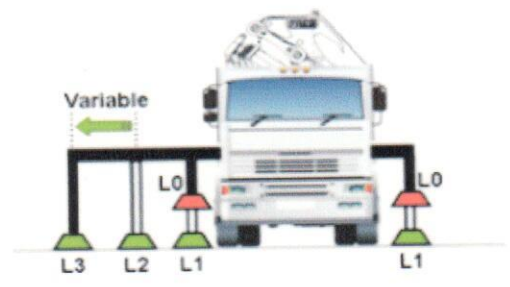


Via Roma, 110  
14021 Albino (BG)  
Tel.: +39 035 776400  
Fax: +39 035 755020  
www.fassi.com  
fassi@fassi.com

LOAD DIAGRAM WITH LIFTING MOMENT LIMITING DEVICE





**⚠ Keep wheels in contact with ground**

**START**

**OUTRIGGERS mode**  
Set L1, L2, L3

Push **INDEX** button on remote to view X & Y

Switch from **OUTRIGGERS** to **CRANE** to save starting slope X

**X (Y) = ?** <3deg

>3deg  
**WARNING 99**  
Not a fault code but a warning vehicle is not optimally stabilised

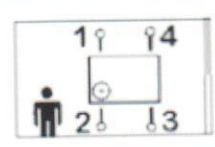
Select & push **LMI** icon on remote to clear WARNING

**Crane will unfold?**  
No: X > 5deg

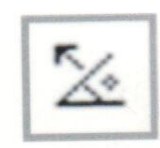
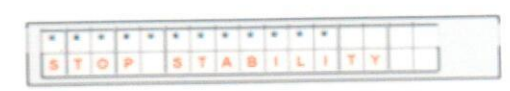
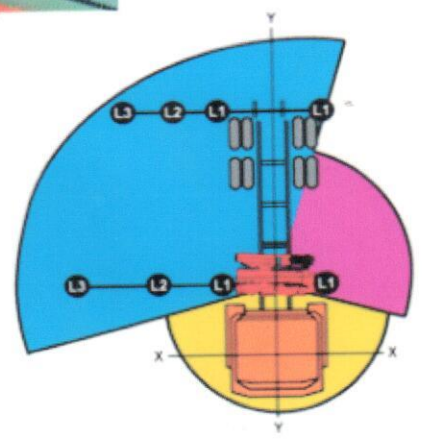
Yes: X > 3 < 5deg  
**Work normally**

**STOP STABILITY ?**  
Yes

Retract extensions to reduce lifting moment  
No  
**END**



(Y) axis no longer controlled from 2012 crane software (WARNING 99 will always clear)



Icon appears on radio display & flashes at 80% of max allowable inclination